

For Mercedes-benz S-Class 2006-2013 (4321) Installation Guide



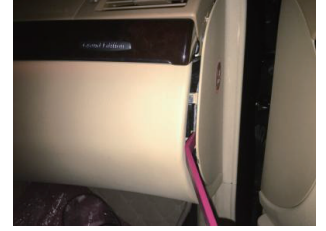
1. Original Monitor(Please power off before installation)



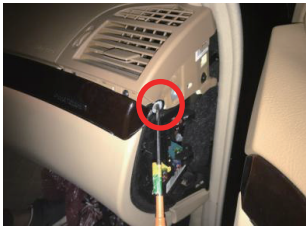
2. Pry out the left panel



3.Remove the fixing screws



4. Pry out the right panel



5.Remove the fixing screws



6. Pry out and remove the air outlet panel of the air conditioner, and then remove the fixing screw.



7. Pry out the air-conditioning panel of the Host and remove it.



8. Pry out the decorative strip below the display



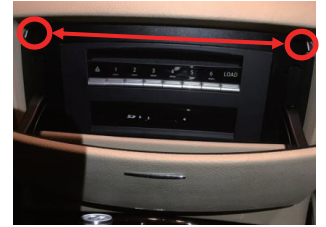
9. Remove the fixing screws



10. Pry out the decorative strip above the display



11.Remove fixing screw of the display



12. Open the screw cover and remove the screws



13. Pry out the decorative panel of the host



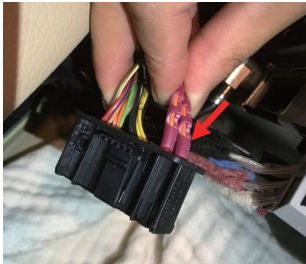
14.Remove the fixing screws



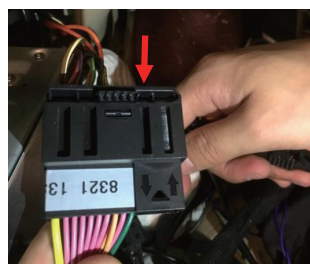
15. Take out the decorative frame of the original car host



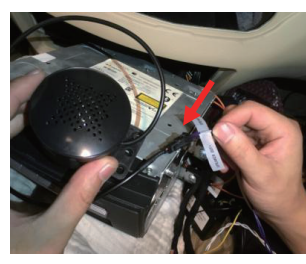
16. Loosen the fixing screws of the Host



17. Remove the power harness of fiber optic cable from original host.



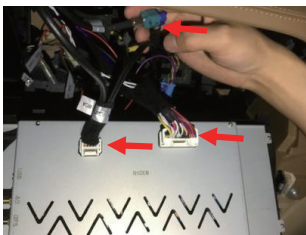
18.Connect the power harness of the original car host to Android harness.



19.Connect the navigation speakers to the Android harness



20.Connect the AMI audio cable to the AMI interface of the armrest box



21. Connect well Android all cables,and fixing and install Android device



22.Effect picture after installation



23. Android Cables connector

- 1.4G antenna Port
- 2.GPS antenna Port
- 3.RCA cable LVDS adapter
- 4.RCA Port
- 5.USB Port
- 6.Android Power Interface
- 7.2015/2016year shared CAN interface
- 8.2015/2016year short-circuited wiring interface
- 9.Audio USB port
- 10.2015year CAN interface
- 11.2016year CAN interface
- 12.ISO female plug
- 13.ISO male plug