

Security considerations

Announcements:

- ◆ Pls check the appearance and the unit functions before install the unit.
- ◆ Dnot shorten or extened the GPS antenna, it will lead to the antenna problem.
- ◆ Don't make the GPS antenna winding the steering wheel and shift lever, it will be dangerous.

Warm prompt

1. Don't use strong chemicals, cleaning agents, strong detergent to washing the machine

2. Please use a clean soft fabric to wipe the screen, don't use ordinary fabric

3. Please use the touch screen pen to operation unit, please don't use other sharp objects, or it will damage to the screen

4. Please don't self-service, maintenance or install the unit, in case of the power is on, don't install or repair the unit. It is very dangerous if the person who did not receive the electronic equipment or vehicle installation training or lack of experienced personnel to install and repair the unit.

5. Please protect the original display when the staff dismounting the original CD and keep the original CD, try to use the original screw.

6. Navigation and rearview camera only do auxiliary function, it can't replace your attention and judgment.

7. When the customer choose the digital TV, our unit could realized the digital TV touch.

The publicity material only for reference, we dont make the further notice if the information have any changes, our company has the final explanation right!

BMW F20 Navigation & Audio System Installation Instruction and Things To Note



Installation Manual



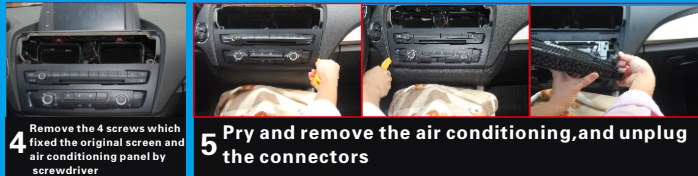
1 Center Console Picture



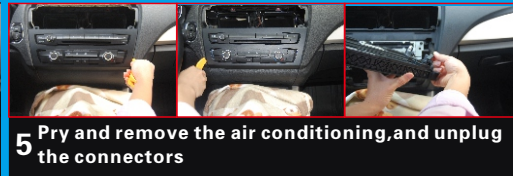
2 Accessories: 1) Head Unit 2) Mini Speaker 3) iPod cable 4) USB cable 5) GPS antenna and two screws for fix Head Unit 6) User Manual 7) Touch pen 8) Video cable 9) Power cable 10) Head Unit and display screen connecting cable 11) Display Screen



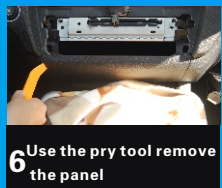
3 Pry and remove air conditioning vent by pry tool, and unplug the connector



4 Remove the 4 screws which fixed the original screen and air conditioning panel by screwdriver



5 Pry and remove the air conditioning, and unplug the connectors



6 Use the pry tool remove the panel



7 Remove the two screws which for the original CD



8 Remove the original display screen and unplug the connector

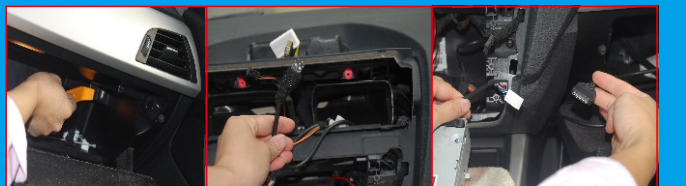
Installation Manual



9 Unplug the original CD's connector, connect to our power cable, if there are fiber optic wires, please move to relevant PIN of our connector

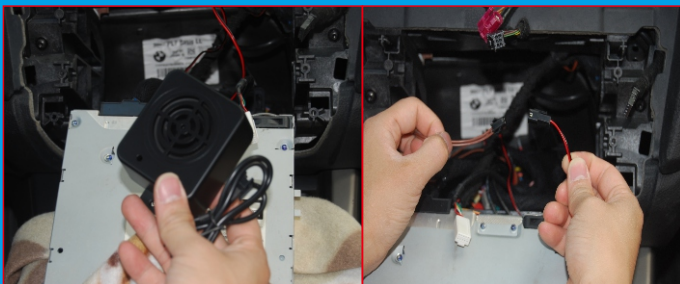


10 Plug the Head Unit and display screen connecting cable and GPS antenna



11 Put the USB cable to USB slot in storage box, and put the iPod cable to there too.

Installation Manual



12 Install the mini speaker and plug the mini speaker connector



13 Plug all connectors and tighten the screws to fix the CD and head unit



14 Plug all connectors in screen and fix the screen by screws



15 Put the air conditioning panel, panel, air conditioning vent back and plug all connectors, tighten the screws

16
After installation picture

How to setting up the sounds

Set up our unit's sounds out from original speakers.



1 Switch to original radio interface



2 Switch to main interface by press MENU button in Idrive



3 Choice CD/Multimedia



4 Enter into Multimedia interface by Idrive



5 Start the AUX and adjust to proper volume



6 Press MENU button 3 Seconds to enter into our main interface



2 nterface,now the original radio or CD still have sounds and navigation sounds from MINI speaker

Setting up the Navigation sounds from MINI speaker while listening original radio and CD



**1 Switch to original radio or CD interface
Press the voice shortcuts button to enter into navigation**